

Rookie

Konstantin Grcic, 2018

vitra.



Rookie

Rookie is a small, agile and – by office standards – unconventionally simple chair. It provides a high level of immediate comfort with a minimal number of adjustments.

‘Rookie is all about flexibility and change. Its design aesthetic symbolises that magic moment when something new is beginning, but everything is still up in the air. Equally suited as a single desk chair for students or in larger numbers across a wide range of corporate workplaces, Rookie is designed for environments that encourage the creation and exchange of ideas.’ Konstantin Grcic

Both the seat and backrest of Rookie are height-adjustable. In addition to these classic functions of a task chair, other ergonomic features are directly incorporated into Rookie’s structural design: the backrest flexes slightly when pressure is applied, and the front edge of the seat is unusually pliant.

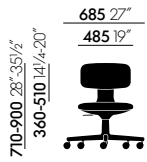
A few aesthetic details reveal affinities with Allstar, the first office chair developed by Grcic for Vitra. Just like Allstar, Rookie is an excellent seating solution for modern offices, universities and other environments where users with mobile work habits do not want to make a lot of individual adjustments every time they change locations.

Gas-assist injection moulding technology is used to manufacture Rookie’s plastic seat shell, which extends upwards at the rear to support the backrest element. The matching shell components and base are available in either a light-toned or dark-toned version.

The seat and backrest covers come in a selection of various fabrics and one type of leather. This presents an array of colour choices, enabling both subtle and striking combinations. And as all of these materials and colours belong to the Vitra Colour & Material Library curated by Hella Jongerius, they can be grouped together to designate special areas or team zones within an office, or can be interpreted in the context of a corporate colour scheme.

Materials

- **Studio chair (swivel, height-adjustable) in accordance with EN 16139.**
- **Backrest:** back made of polypropylene and back cushion made of polyurethane foam. Back shell in soft grey or deep black; back cushion with fabric or leather cover stretched over padding. Backrest height adjustable up to 55 mm using a quick release lever.
- **Seat:** polypropylene shell in soft grey or deep black; polyurethane foam cushion; fabric or leather cover stretched over padding. Equipped as standard with seat height adjustment.
- **Base:** five-star base made of polyamide in soft grey or deep black; double castors (Ø 60 mm) in basic dark.



Rookie



Rookie High

COLOURS AND MATERIALS



12
deep black



12
deep black



53
soft grey



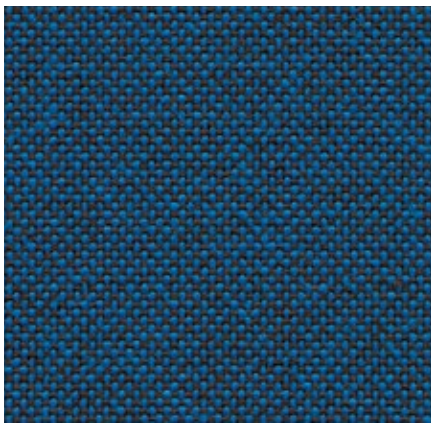
53
soft grey

Seat shell

Base and frame

Plano Home/Office, F30

vitra.



Plano is a robust plain weave with a flat, even texture. The wide palette of duotones with new, delicate washed-out shades includes many relatively neutral hues, a good number of which are coordinated with the Hopsak colour range. Thanks to its durability and longevity, Plano is also an ideal choice for office furnishings.

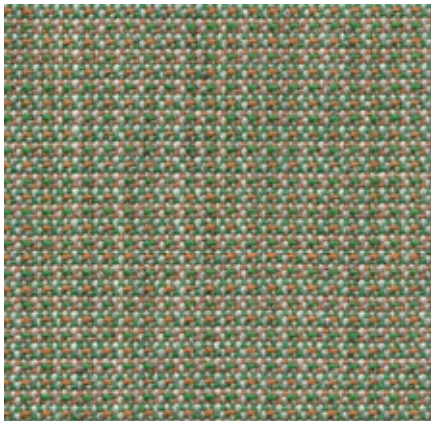
Plano is available in 39 colours.

Material	100% polyester
Weight	265 g/m ² (7.8 oz/y ²)
Width	142 cm +/- 2 cm (56'')
Abrasion resistance	80,000 Martindale
Fastness to light	Type 6
Pilling	Grade 4-5
Fastness to rubbing	Grade 4-5 dry and wet



Tress Home/Office, F8o

vitra.



Tress is a flat woven fabric with a lively appearance that derives from the contrast between its even structure and the natural melange of colours. The combination of yarns with varied hues creates a harmonious and yet vibrant look. Thanks to its high wool content, Tress is a durable, easy-care material with a home-like aesthetic. Tress is available in 22 colours.

Material	8% polyamide, 73% new wool, 19% polyester
Weight	310 g/m ² (9.1 oz/y ²)
Width	142 cm +/- 2 cm (56")
Abrasion resistance	40,000 Martindale
Fastness to light	Type 6
Pilling	Grade 4-5
Fastness to rubbing	Grade 4-5 dry and wet



Volo Home/Office, F6o

vitra.



Volo is a finely structured wool blend with a refined weave that gives it an elegant appearance. This expressive textile shows strong solid colours to full advantage while simultaneously offering pleasant tactile qualities. With its soft look and appealing texture, Volo is a perfect fit for home interiors, but it is also well suited for use in the contract sector.

Volo is available in 17 colours.

Material	15% polyamide, 85% new wool
Weight	435 g/m ² (12.8 oz/y ²)
Width	145 cm +/- 3 cm (57'')
Abrasion resistance	100,000 Martindale
Fastness to light	Type 6
Pilling	Grade 4-5
Fastness to rubbing	Grade 4-5 dry and wet



04
lemon



56
teal blue



14
iron grey



13
moor brown



06
summer grass



51
ice blue



15
mid-grey



69
marron



07
fern



10
indigo



02
dark grey



77
brick



08
green-grey



11
night blue



16
black



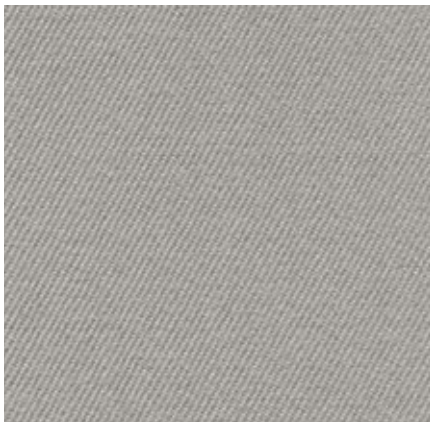
12
red



05
canola

Twill Home/Office, F6o

vitra.



The high percentage of natural fibres gives Twill very pleasant tactile qualities and an inviting appearance. Extremely durable with excellent abrasion resistance, it combines the qualities typically found in home furnishings with the demanding requirements of the project sector.

Twill is available in 18 colours.

Material	30% polyamide, 70% new wool
Weight	325 g/m ² (9.6 oz/y ²)
Width	155 cm +/- 2 cm (61")
Abrasion resistance	100,000 Martindale
Fastness to light	Type 6
Pilling	Grade 4-5
Fastness to rubbing	Grade 4-5 dry and wet



Leather Home/Office, L20

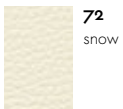
vitra.



The standard grade leather used by Vitra is a robust cowhide leather, dyed-through, pigmented and embossed with an even grain pattern. Since it is hard-wearing and easy to maintain, it can also be used in office environments.

Leather is available in 16 colours.

Material	Robust cowhide with a distinctive, even grain
Fastness to light	Type 6
Thickness	1.1–1.3 mm
Fastness to rubbing	Grade 4 dry and wet



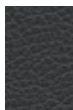
72
snow



21
dim grey



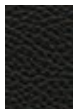
71
sand



67
asphalt



69
marron



66
nero



68
chocolate



70
red

